



Department of  
Social and Behavioural Sciences

香港城市大學  
City University of Hong Kong

# Department of Social and Behavioural Sciences

Master's Programmes



Year 2026 Intake

# Master of Arts in Applied Social Sciences

MAASS (P77)

<b>Normal Duration</b>	1 Year (full-time) / 2 Years (part-time/combined mode)
<b>Maximum Study Period</b>	2.5 Years (full-time) / 5 Years (part-time/combined mode)
<b>Mode of Programme</b>	Combined†
<b>Minimum No. of Credits Required</b>	30 (for Sociology / Criminology / Clinical Mental Health Practice Stream)
<b>Medium of Instruction</b>	English

## Programme Intended Learning Outcomes (PILOs):

Upon successful completion of the programme, students should be able to:



evaluate major principles/theories in different disciplines in social sciences;



demonstrate the ability to integrate major principles/theories in analysing social problems;



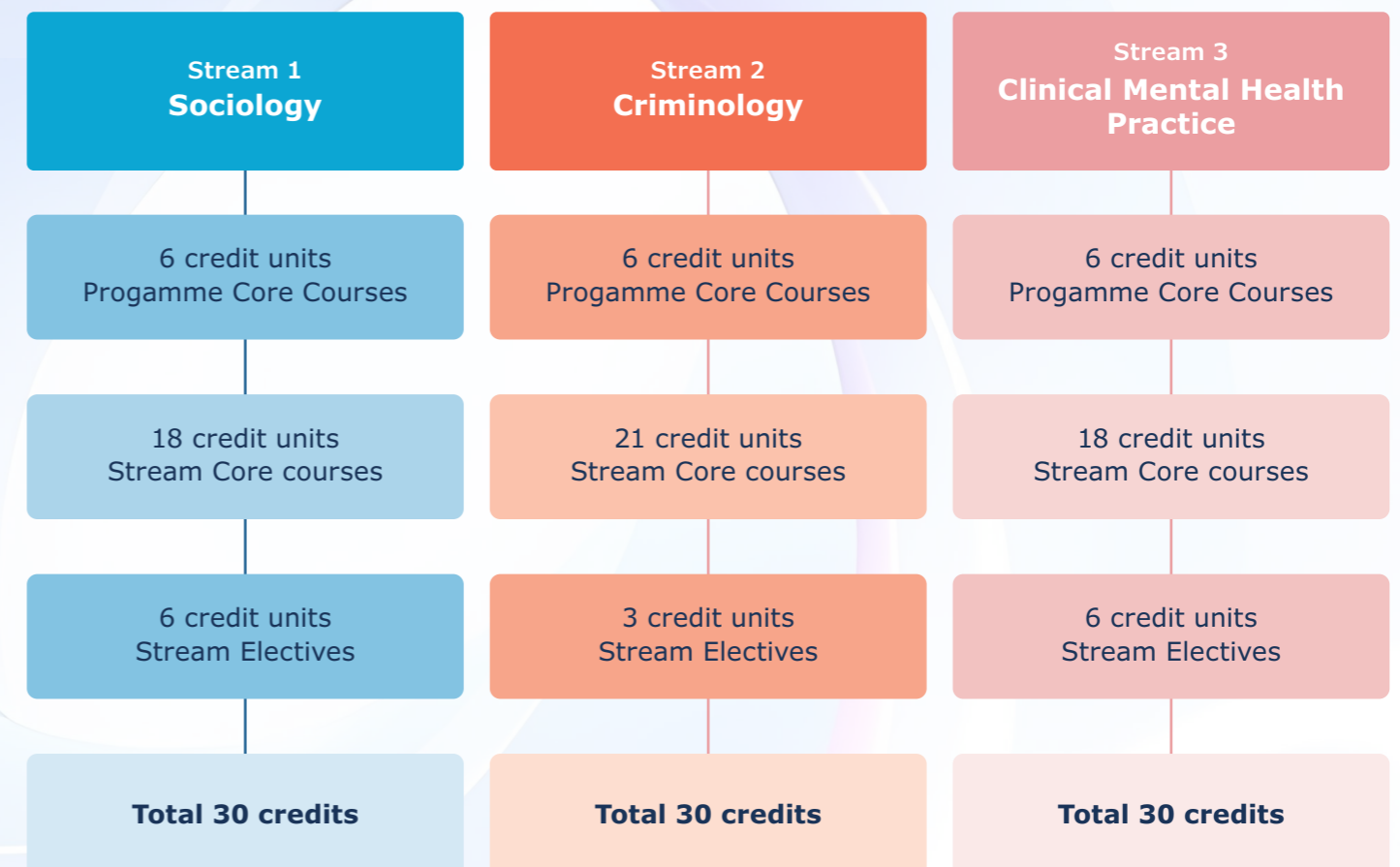
demonstrate the ability to design and conduct research in social sciences; and



devise innovative practices in social sciences to real-life problems.

## Programme Profile#

### Master of Arts in Applied Social Sciences



## Programme Aims

The programme aims to train social science practitioners with sound knowledge in theory and practice to help people, organisations and communities develop innovative solutions, and to accomplish excellence in undertaking research in social sciences.

## Programme Features

- MA degree with three main streams - 1) Sociology; 2) Criminology and 3) Clinical Mental Health Practice. Applicants are required to indicate the selected stream when submitting applications; and admitted students are not allowed a change of stream.
- The Stream courses will be taught by a strong team of experts from sociology, criminology, psychology, social work, counselling and psychology backgrounds. Students from various backgrounds also form circles to enrich synergy for effective learning.



### Stream 1 Sociology

- Core courses provide a solid foundation on applied sociology theories and social research methodologies.
- "Integrative Project" is an opportunity for students to apply sociological theories, methods and ethics. The Project focuses on an actual problem or issue.
- Students can select any two electives from a list of courses in different fields.

### Stream 2 Criminology

- The stream aims at training students in becoming competent researchers and/or practitioners at an advanced level in the key areas of policing and offender rehabilitation.

### Stream 3 Clinical Mental Health Practice

- The stream aims at providing students, who are social work and helping professionals, advanced level training in clinical mental health practice.
- The stream equips students with various mental health theories and practical skills which can help them develop their specialized knowledge and practice competence to work with a diversity of people with mental health problems, such as schizophrenia, depression, anxiety, special educational needs, prolonged grief disorder, and dementia.

## Entrance Requirements

To be eligible for admission, you must:

- hold a recognised bachelor's degree from one of the universities in Hong Kong or from any overseas institution recognised for this purpose by the University; or
- hold such other qualifications as deemed acceptable by the University as equivalent to the above.

Applicants whose entrance qualification is obtained from an institution where the medium of instruction is not English should also fulfill the following minimum English proficiency requirement:

a score of **79** (Internet-based test) on the Test of English as a Foreign Language (TOEFL)<sup>@</sup> or an overall band score of **6.0** in International English Language Testing System (IELTS)<sup>@##</sup> or a score of **450** of band 6 in the Chinese mainland's College English Test or other equivalent qualifications

<sup>@</sup> TOEFL and IELTS scores are considered valid for two years. Applicants are required to provide their English test results obtained within the two years preceding the commencement of the University's application period.

<sup>#</sup> Applicants are required to arrange for the Educational Testing Service (ETS) to send their TOEFL results directly to the University. The TOEFL institution code for CityU is 3401.

<sup>##</sup> Applicants are required to arrange for sending their IELTS result(s) via the IELTS Results Service e-delivery to the University. **Please note that applicants with an overall band score of 6.0 will be required to pass an interview for English proficiency conducted by the Department. Interviews for other applicants may not be required.**

# Programme Structure

There are no intermediate exits, students may obtain the MA degree by completing a total of 6 credit units of programme core courses, and



For Stream 1: Sociology, Stream 2: Criminology, students are required to take 2 Programme Core Courses (6 credit units)

SS5302	Research Methods in Social Sciences	3
SS5426	Social Problems	3

For Stream 3: Clinical Mental Health Practice, students are required to take 2 Programme Core Courses (6 credit units)

SS5803	Psychopathology	3
SS5837	Community Mental Health: Theory and Practice	3

## Programme Core Courses (6 credit units)#



## Streams

Students are required to specialize in one stream and take the required credits of courses from their chosen stream



### Stream 1: Sociology

**i) Stream Core Courses**  
Students are required to take 5 courses (18 credit units)

SS5400	Applied Sociology	3
SS5401	Social Science Perspectives	3
SS5423	Programme Design & Evaluation	3
SS5428	Applied Social Statistical Analysis	3
SS6591	Integrative Project	6

**ii) Stream Electives**  
Students are required to take any 2 courses (6 credit units)

SS5204	Penology & Rehabilitation of Offenders	3
SS5303	Criminal Justice in Hong Kong and the Pacific	3
SS5304	Psychology and Crime	3
SS5305	Policing Studies	3
SS5316	Aggressive Behavior and Homicide	3
SS5427	Special Topics in Applied Sociology	3

### Stream 2: Criminology

**i) Stream Core Courses**  
Students are required to take 6 courses (21 credit units)

SS5204	Penology & Rehabilitation of Offenders	3
SS5301	Advanced Theories in Criminology	3
SS5303	Criminal Justice in Hong Kong and the Pacific	3
SS5304	Psychology and Crime	3
SS5305	Policing Studies	3
SS6308	Master's Thesis in Criminology	6

**ii) Stream Electives**  
Students are required to take any 1 course (3 credit units)

SS5316	Aggressive Behaviour and Homicide	3
SS5423	Programme Design & Evaluation	3
SS5424	Crime, Law and Security	3
SS5427	Special Topics in Applied Sociology	3
SS5428	Applied Social Statistics Analysis	3

### Stream 3: Clinical Mental Health Practice

**i) Stream Core Courses**  
Students are required to take 6 courses (18 credit units)

SS5110	Assessment and Interventions in Mental Health Counselling	3
SS5836	Evidence-based Assessment and Management of Mental Disorders	3
SS5838	Mental Health Crisis Intervention and Resolution	3
SS5839	Neurodiversity, Students with Special Educational and Emotional Needs	3
SS5840	Dementia Care and Mental Health Counselling for Older People	3
SS6404	Master's Integrative Project in Clinical Mental Health Practice	3

**ii) Stream Electives**  
Students are required to take any 2 courses (6 credit units)

SS5208	Cognitive-Behavioural Interventions	3
SS5216	Contemporary Intervention Approaches	3
SS5801	Counselling in Society and Across Culture	3
SS5825	Marital Preparation, Enrichment and Therapy	3

**Tuition Fee**  
Pay on credit unit basis  
HK\$6,600 per credit Programme

Programme Email [mssaps@cityu.edu.hk](mailto:mssaps@cityu.edu.hk)

# Master of Social Sciences in Psychology

MSSPSY (P76)

## Normal Duration

1 Year (full-time) / 2 Years (part-time/combined mode)

## Maximum Study Period

2 Years (full-time) / 5 Years (part-time/combined mode)

## Mode of Programme

Combined†

## Minimum No. of Credits Required

30

## Medium of Instruction

English

## Programme Aims

This conversion program is designed to provide non-psychology degree holders with the knowledge, skills, exposure, and insights for (1) analyzing human behaviors from a psychological perspective, (2) developing research expertise in applying psychology to relevant settings, and (3) pursuing advanced professional training and a career in psychology and closely related areas. Upon completion of the program, students will be eligible to apply for graduate membership of the Hong Kong Psychological Society.

## Programme Intended Learning Outcomes (PILOs):

Upon successful completion of the programme, students should be able to:



critically evaluate major principles/ theories in core areas of psychology



apply major psychological theories/principles to analyze human behaviors in real life situations;



critically evaluate research evidence published in psychological journals;



design and carry out psychological research independently; and



appreciate the close connection between psychology and everyday experiences.

## Programme Profile#

### Master of Social Sciences in Psychology

#### Applied Psychology Stream

#### Education Stream

21 credit units  
Programme Core Courses

9 credit units Electives

9 credit units Electives

**Total 30 credits**

**Total 30 credits**

## Programme Features

- Designed primarily to provide degree-holders having no undergraduate training in psychology to pursue further study and a career in psychology.
- Focus on the cultivation of a distinctive blend of knowledge and skills relevant to advanced training and different careers in psychology.
- Multiple concentrations catering for different interests and career aspirations.

## Entrance Requirements

To be eligible for admission, you must satisfy the General Entrance Requirements and:

- have a recognized bachelor's degree from one of the universities in Hong Kong or from any overseas institutions recognized for this purpose by the University, or
- an equivalent qualification, or
- have evidence of academic and professional attainments acceptable for this purpose by the University.

Applicants whose entrance qualification is obtained from an institution where the medium of instruction is not English should also fulfill the following minimum English proficiency requirement:

a score of **79** (Internet-based test) on the Test of English Language (TOEFL)<sup>@#</sup> or an overall band score of **6.0** in International English Language Testing System (IELTS)<sup>@##</sup> or a score of **450** of band 6 in the Chinese mainland's College English Test or other equivalent qualifications

<sup>@</sup> TOEFL and IELTS scores are considered valid for two years. Applicants are required to provide their English test results obtained within the two years preceding the commencement of the University's application period.

<sup>#</sup> Applicants are required to arrange for the Educational Testing Service (ETS) to send their TOEFL results directly to the University. The TOEFL institution code for CityU is 3401.

<sup>##</sup> Applicants are required to arrange for sending their IELTS result(s) via the IELTS Results Service e-delivery to the University. **Please note that applicants with an overall band score of 6.0 will be required to pass an interview for English proficiency conducted by the Department. Interviews for other applicants may not be required.**

Remarks: For the Education stream, preference will be given to those who have had at least 2 years working experience in the educational setting. For both streams, prior knowledge about research methods and statistics would be an advantage.

## Programme Requirement

Students may obtain the MSocS degree by studying in either Applied Psychology Stream or Education Stream.

### 1. Common Core Courses (21 credits)

Course Code	Course Title	Level	Credit Units	Remarks
SS5750	Perception and Cognition	P5	3	
SS5752	Life Span Development	P5	3	
SS5753	Advanced Social Psychology	P5	3	
SS5756	Biological Basis of Behavior	P5	3	
SS5757	Personality Theories and Assessment	P5	3	
SS5783	Psychological Research Design and Analysis	P5	3	
SS5799	Capstone Project in Psychology	P5	3	} Either one of the two
SS5798B*	Dissertation	P5	6	

\* SS5798B is offered as an option to students who have strong interest and ability in research. The availability of this option is subject to the approval by the Course Leader of SS5798B.

### 2. Courses for Respective Path ( 9 credit units)

Students are required to take any 9 credit units from respective stream course list.

#### Applied Psychology Stream

Course Code	Course Title	Level	Credit Units
SS5755	Applying Psychology to Contemporary Issues	P5	3
SS5782	Psychopathology and Diagnosis of Mental Disorder	P5	3
SS5791	Advanced Health Psychology	P5	3
SS5794	Psychological Testing	P5	3

#### Education Stream

Course Code	Course Title	Level	Credit Units
SS5751	Learning and Behavior	P5	3
SS5758	Educational Psychology	P5	3
SS5759	Educational Assessment and Evaluation	P5	3
SS5763	Special Topics in Psychology of Education	P5	3

## Professional Accreditation

Upon completion of the program, students will be eligible to apply for graduate membership of the Hong Kong Psychological Society. However, membership is granted on the basis of individual merits but not automatically upon application.

**Tuition Fee**  
**Pay on credit unit basis**  
**HK\$6,600 per credit Programme**

**Programme Email** ssmssap@cityu.edu.hk

# Master of Social Sciences in Counselling

MSSC (P20)

<b>Normal Duration:</b>	1 Year (full-time) / 2 Years (part-time)
<b>Maximum Study Period:</b>	2.5 Years (full-time) / 5 Years (part-time)
<b>Mode of Programme:</b>	Combined†
<b>Intermediate Award:</b>	Postgraduate Diploma in Counselling (PGDC) Postgraduate Certificate in Counselling (PGCC)
<b>Minimum No. of Credits Required:</b>	Master's Degree -- 30; Postgraduate Diploma -- 24 Postgraduate Certificate -- 12
<b>Medium of Instruction:</b>	English

## Programme Aims

This programme aims to develop the competence of professional practitioners working in a broad range of human services by offering professional and advanced education in counselling.

## Programme Intended Learning Outcomes (PILOs):

Upon completion of the programme, graduates will be able to:



cultivate the ability to engage in reflective practice within the counselling profession, emphasizing the importance of personal qualities, attitudes, skills, and adherence to ethical standards;



strengthen the ability to analyze cases by interpreting underlying meanings through the application of theoretical frameworks from diverse counselling perspectives, grounded in comprehensive counselling knowledge and theories;



acquire the skills to design and implement effective counselling interventions, informed by ongoing assessments that verify theoretical formulations, and tailored to the unique backgrounds and individual needs of clients; and



develop the capacity to function as a social scientist who relies on evidence-based practices to complete a project or counselling practicum, ensuring that results or interventions are supported by empirical research and data.

## Programme Features\*

- For counselling practicum, the department will help students arrange their practicum sites as closely to their preference as possible. Students can also select their practicum sites on their own for practice training upon approval by the Practicum Coordinator.
- Excellent quality and ratio between the client contact hours and supervision hours in 2:1 in Counseling Practicum, consisting of 120 face-to-face direct client contact hours under 26 individual supervision hours and 36 group supervision hours.
- The graduates not only could register as a full member at Hong Kong Professional Counselling Association (HKPCA) but for those complete the counselling practicum also could register at British Association for Counselling and Psychotherapy (BACP) in the U.K., the Australian Counselling Association (ACA) in Australia, and BC Association of Clinical Counsellor (BCACC) in Canada.
- Multiple exit points (Postgraduate Certificate in Counselling (PGCC), Postgraduate Diploma in Counselling (PGDC), and Master of Social Sciences in Counselling (MSSC)).

\* Subject to update if applicable

## Entrance Requirements

To be eligible for admission, you must satisfy the General Entrance Requirements and:

- hold a Bachelor's degree of one of the universities in Hong Kong or of any overseas institution recognised for this purpose by the University; or
- have obtained an equivalent qualification, or provide evidence of academic and professional attainments acceptable for this purpose by the University; and
- have preferably two years' working experience in social service, education, health, human services, human resources or related areas.

Applicants whose entrance qualification is obtained from an institution where the medium of instruction is not English should also fulfill the following minimum English proficiency requirement:

a score of **79** (Internet-based test) on the Test of English as a Foreign Language (TOEFL)<sup>@#</sup> **or** an overall band score of **6.0** in International English Language Testing System (IELTS)<sup>@##</sup> **or** a score of **450** of band 6 in the Chinese mainland's College English Test **or** other equivalent qualifications

<sup>@</sup> TOEFL and IELTS scores are considered valid for two years. Applicants are required to provide their English test results obtained within the two years preceding the commencement of the University's application period.

<sup>#</sup> Applicants are required to arrange for the Educational Testing Service (ETS) to send their TOEFL results directly to the University. The TOEFL institution code for CityU is 3401.

<sup>##</sup> Applicants are required to arrange for sending their IELTS result(s) via the IELTS Results Service e-delivery to the University. **Please note that applicants with an overall band score of 6.0 will be required to pass an interview for English proficiency conducted by the Department. Interviews for other applicants may not be required.**

## Students may obtain the MSSC degree either by completing

### Path A

full-time mode in one year with taking Project;

**or**

### Path B

part-time mode in two years with taking either Project or Counselling Practicum

## Programme Structure

Programme curriculum is made up of (a) core courses; and (b) elective courses forming a "general electives" group, a "research methods" group, and a "specialised electives" group.

To graduate with the MSSC award, full-time students must complete the Project (two-semester course) in Semester B and Summer Term in their first year of study; for part-time students, to complete either the Counselling Practicum or the Project (both are two-semester courses) before the completion.

For Counselling Practicum, practicum sites for students to fulfill 120 clinical hours with 26 individual and 36 group supervision hours will be arranged in practicum practice.

Nature	Course Name	Credit	Level of Award				
			PGC	PGD	Master		
Core Courses	SS5800 Counselling Theories and Practice	3	✓	✓	✓		
	SS5801 Counselling in Society and Across Culture	3	-	✓	✓		
	SS5802 Group Counselling and Therapy	3	✓	✓	✓		
	SS5803 Psychopathology	3	-	✓	✓		
	SS5822 Family-based Service and Family Practice	3	✓	✓	✓		
	SS5841 Counselling Skills Laboratory and Pre-practicum	3	✓	✓	✓		
	SS6805 Project OR SS6806 Counselling Practicum	6	-	-	✓		
Programme Electives*	General Electives	SS5208 Cognitive-Behavioural Interventions	3	-	Take 2 out of 10	Take 2 out of 10	
		SS5216 Contemporary Intervention Approaches	3				
		SS5430 Case Management and Practice	3				
		SS5752 Life Span Development	3				
		SS5757 Personality Theories and Assessment	3				
		SS5805 Narrative-based Therapeutic Conversations: Theory and Practice	3				
	Research Methods	SS5302 Research Methods in Social Sciences	3				
		Specialised Electives	SS5110 Assessment and Interventions in Mental Health Counselling				3
			SS5316 Aggressive Behaviour and Homicide				3
			SS5814 Vocational Counselling and Assessment				3
SS5821 Counselling Children and Youth	3						
	SS5832 Counselling Older Adults	3					
Total Credits			12	24	30		

\* Subject to update

Tuition Fee  
Pay on credit unit basis  
HK\$6,600 per credit Programme

Programme Email [mssc@cityu.edu.hk](mailto:mssc@cityu.edu.hk)

# Master of Social Work

<b>Programme Code:</b>	MSW (P71)
<b>Normal Duration:</b>	2 Years (full-time) / 3 Years (part-time)
<b>Maximum Study Period:</b>	5 Years (full-time) / 7.5 Years (part-time)
<b>Mode of Programme:</b>	Combined†
<b>Minimum No. of Credits Required:</b>	Master's Degree --55
<b>Medium of Instruction:</b>	English

Upon successful completion of the programme, students should be able to



use appropriate knowledge, theories and demonstrate skills in social work in order to become competent and professional in their practice;



reflect on their own practice so that they can intellectually construct, articulate and evaluate their own philosophy and practice in reference to social work values and ethics;



demonstrate the ability to integrate theory in practice in an innovative way, discover and examine culturally relevant social work practice;



evaluate professional activities and service programmes, changing social needs and advocacy for appropriate welfare reforms and service delivery.

## Programme Aims

The MSW programme is a self-funded programme with the aim to train professionals qualifying for recognised social work qualification (RSW) at the Master's degree level. It aspires to train students becoming ethically-oriented social work practitioners being competent, reflective and good in professional practice.

## Programme Features

- 2 years for the full-time MSW degree, with 1 concurrent placement in Year 2 Semester A and 1 block fieldwork placement in Year 2 Semester B (maximum study period: 5 years). Concurrent fieldwork placement is conducted in 17 weeks with 3 days per week or 6 sessions whereas block fieldwork placement is conducted in 10 weeks with 5 days per week;
- 3 years for the part-time MSW degree to students taking two concurrent fieldwork placements in Year 2 and 3 Semester A & B respectively (maximum study period: 7.5 years). Concurrent fieldwork placement in the part-time study mode is conducted in 25 weeks with 2 days per week or 4 sessions per week;
- The MSW programme consists of 15 core courses amounting to 49 credits plus another 2 electives carrying 6 credits, making a total of 55 credit-units in the programme;
- 900 fieldwork training hours (800 hours direct fieldwork placements plus 100 hours placement preparation or related activities).

## Programme Features

The curriculum of the year 1 of full-time 2 years mode and the year 1 and year 2 of part-time 3 years mode aspires to train students with ethical principles and foundations of social work practice, social work values, and professional ethics, theories and practice skills in working with individual and families, groups and community, social welfare policies, social welfare management, legal issues for social workers and social work research methods. The curriculum of the year 2 of full-time 2 years mode and the year 2 and year 3 of part-time 3 years mode strives to equip students to have the required professional supervised fieldwork training hours and the 100-hour Practicum-related learning workshops, plus the study of Integrative Social Work Seminar and elective courses in practice-related social work practice settings.

Students who (1) are non-social sciences graduates, or (2) have taken either psychology or sociology but not the other, are required to complete non-credit bearing Social Sciences Workshops SS5115 Social Sciences Theories for Social Work\*. These workshops are to be run in an intensive mode on Saturday within the first five weeks of the semester.

Core Courses (49 Credits)		Credits
SS5111	Social Welfare Policy System and Reforms	3
SS5112	Social Welfare Management	3
SS5114	Legal Issues for the Social Worker	3
SS5117	Social Work as a Profession	3
SS5209	Social Work Theories & Practice I: Working with Individuals and Families	3
SS5210	Social Work Theories & Practice II: Working with Groups	3
SS5211	Social Work Theories & Practice III: Community Work and Macro-level Social Work Practice	3
SS5212	Human Behaviour and Diversity	3
SS5213	Social Work Research Methods	3
SS6219	Practicum Related Workshop I	1
SS6220	Practicum Related Workshop II	1
SS6221	Practicum Related Workshop III	1
SS6291	Fieldwork I	8
SS6292	Fieldwork II	8
SS6293	Integrative Social Work Seminar	3
Programme Electives (6 credits) take any 2 electives		Credits
SS5110	Assessment and Interventions in Mental Health Counselling	3
SS5115	Social Science Theory for Social Work*	0
SS5208	Cognitive-Behavioural Interventions	3
SS5215	Diversity and Social Work	3
SS5216	Contemporary Intervention Approaches	3
SS5802	Group Counselling and Therapy	3
SS5803	Psychopathology	3
SS5821	Counselling Children and Youth	3
SS5832	Counselling Older Adults	3

\* Social Sciences Workshops: Students are required to take non-credit bearing social sciences workshops SS5115 Social Sciences Theories for Social Work on Saturday (whole day) of the first 5 weeks of year 1 Semester A if they are non-social sciences graduates or have taken either psychology or sociology but not the other.

## Entrance Requirements

To be eligible for admission, you must:

- hold a recognised bachelor's degree from one of the universities in Hong Kong or from any overseas institution recognised for this purpose by the University; or
- hold such other qualifications as deemed acceptable by University as equivalent to the above; and
- pass an admission interview.

Applicants whose entrance qualification is obtained from an institution where the medium of instruction is not English should also fulfill the following minimum English proficiency requirement:

a score of **79** (Internet-based test) on the Test of English as a Foreign Language (TOEFL)<sup>@#</sup> **or** an overall band score of **6.0** in International English Language Testing System (IELTS)<sup>@##</sup> **or** a score of **450** of band 6 in the Chinese mainland's College English Test **or** other equivalent qualifications

@ TOEFL and IELTS scores are considered valid for two years. Applicants are required to provide their English test results obtained within the two years preceding the commencement of the University's application period.

# Applicants are required to arrange for the Educational Testing Service (ETS) to send their TOEFL results directly to the University. The TOEFL institution code for CityU is 3401.

## Applicants are required to arrange for sending their IELTS result(s) via the IELTS Results Service e-delivery to the University. **Please note that applicants with an overall band score of 6.0 will be required to pass an interview for English proficiency conducted by the Department. Interviews for other applicants may not be required.**

## Career Prospects

Upon graduation, students are eligible to be a Registered Social Worker (RSW) in Hong Kong.

**Tuition Fee**  
**Pay on credit unit basis**  
**HK\$6,600 per credit Programme**

**Programme Email** [assmsw@cityu.edu.hk](mailto:assmsw@cityu.edu.hk)

# Fee

---

Application Fee: HK\$600 for online application  
(non-refundable, to be paid at the time of application)

---

Programme Fee: Local students: HK\$6,600 per credit for all programmes  
Non-Local students: HK\$6,600 per credit for all programmes

---

## Government Loan

Full-time and part-time students who meet the residency requirements may apply for Non-means-tested Loan Scheme administered by the Hong Kong Government Student Finance Office (SFO). Application procedures can be referred to the SFO website.

Enquiries: 2150 6222 | Website: <https://www.wfsfaa.gov.hk/sfo/>

## Application

You can submit online application at <https://www.cityu.edu.hk/pg/taught-postgraduate-programmes/apply-now>  
Application deadline may be extended depending on the number of applications received. However, priority will be given to the applicants who submit an application before the initial deadline.

## Mode of Programme

† Combined mode: Local students taking programmes in combined mode can attend full-time (12-18 credit units per semester) or part-time (no more than 11 credit units per semester) study in different semesters without seeking approval from the University. For non-local students, they will be admitted to these programmes for either full-time or part-time studies. Non-local students must maintain the required credit load for their full-time or part-time studies and any changes will require approval from the University.

## Enquiry

---

### *For academic matters*

Department of Social and Behavioural Sciences  
(SS) City University of Hong Kong  
LI 5510, Li Dak Sum Yip Yio Chin Academic  
Building Tat Chee Avenue, Kowloon, Hong Kong

**Enquiries:** (852) 3442-8991/ (852) 3442-8996  
**Fax:** (852) 3442-0283  
**Email:** [ssgo@cityu.edu.hk](mailto:ssgo@cityu.edu.hk)  
**Website:** [www.cityu.edu.hk/ss](http://www.cityu.edu.hk/ss)

Programme Website:  
<https://ssweb.cityu.edu.hk/study/taught-postgraduate-programmes>

### *For Master's Programmes (Admission)*

Chow Yei Ching School of Graduate Studies (SGS)  
City University of Hong Kong  
2/F, CityUHK International Centre  
Tat Chee Avenue, Kowloon, Hong Kong

**Enquiries:** (852) 3442-5588  
**Fax:** (852) 3442-0187  
**Email:** [tpadmit@cityu.edu.hk](mailto:tpadmit@cityu.edu.hk)

Website:  
[www.cityu.edu.hk/pg/taught-postgraduate-programmes](http://www.cityu.edu.hk/pg/taught-postgraduate-programmes)  
Enquiry form: [www.cityu.edu.hk/pg/enquiries](http://www.cityu.edu.hk/pg/enquiries)